



Government of India  
Ministry of Earth Sciences



India Meteorological Department

## PRESS RELEASE - 6

Time of issue: 1500 hours IST

Dated: 23-05-2021

**Sub: Cyclonic Storm 'Yaas' (pronounced as 'Yass') over Eastcentral Bay of Bengal – (Cyclone Alert for Odisha – West Bengal coasts-**Yellow Message**).**

Yesterday's **Depression** over eastcentral Bay of Bengal (BoB) moved west-northwestwards and intensified into a deep depression over the same region in the midnight (2330 hrs IST of 23<sup>rd</sup> May). Thereafter, it moved slowly north-northwestwards and intensified into the cyclonic storm "YAAS" over eastcentral BoB in the early morning (0530 hrs IST) of today, the 24<sup>th</sup> May, 2021.

It lay centred at 0830 hrs IST of today, the 24<sup>th</sup> May, 2021 over Eastcentral Bay of Bengal near latitude 16.4°N and longitude 89.6°E, about 620 km north-northwest of Port Blair (Andaman Islands), 530 km south-southeast of Paradip (Odisha), 630 km south-southeast of Balasore (Odisha) and 620 km south-southeast of Digha (West Bengal).

It is very likely to move north-northwestwards, intensify further into a **Severe Cyclonic Storm** during next 12 hours and into a **Very Severe Cyclonic Storm** during subsequent 24 hours. It would continue to move north-northwestwards, intensify further and reach Northwest Bay of Bengal near north Odisha and West Bengal coasts by 26<sup>th</sup> May early morning. It is very likely to cross north Odisha-West Bengal coasts between Paradip and Sagar islands around noon of 26<sup>th</sup> May as a Very Severe Cyclonic Storm.

Forecast track and intensity are given in the following table:

Date/Time(IST)	Position (Lat. °N/ long. °E)	Maximum sustained surface wind speed (Kmph)	Category of cyclonic disturbance
24.05.21/0830	16.4/89.6	65-75 gusting to 85	Cyclonic Storm
24.05.21/1130	16.5/89.6	70-80 gusting to 90	Cyclonic Storm
24.05.21/1730	16.8/89.5	90-100 gusting to 110	Severe Cyclonic Storm
24.05.21/2330	17.3/89.1	110-120 gusting to 130	Severe Cyclonic Storm
25.05.21/0530	18.2/88.5	130-140 gusting to 155	Very Severe Cyclonic Storm
25.05.21/1730	19.5/87.9	145-155 gusting to 170	Very Severe Cyclonic Storm
26.05.21/0530	20.8/87.3	155-165 gusting to 185	Very Severe Cyclonic Storm
26.05.21/1730	21.9/86.7	120-130 gusting to 145	Very Severe Cyclonic Storm
27.05.21/0530	22.8/86.3	55-65 gusting to 75	Deep Depression
27.05.21/1730	23.4/85.8	35-45 gusting to 55	Depression

### Warnings:

#### (i) **Rainfall:**

- **North Coastal Andhra Pradesh:** Light to moderate rainfall at many places with heavy falls at isolated places on 24<sup>th</sup> May and heavy to very heavy falls at isolated places on 25<sup>th</sup> May.
- **Odisha:** Light to moderate rainfall at many places with heavy falls at isolated places over Coastal Odisha on 24<sup>th</sup>, with heavy to very heavy rainfall in Puri, Jagatsinghpur, Khurda, Cuttack, Kendrapara, Jajpur, Bhadrak, Balasore districts and heavy over Ganjam, Dhenkanal, Mayurbhanj districts on 25<sup>th</sup>, heavy to very heavy rains at a few places with extremely heavy falls at isolated places in Jagatsinghpur, Cuttack, Kendrapara, Jajpur, Bhadrak, Balasore, Mayurbhanj, Dhenkanal, Keonjhar and heavy falls at isolated places in Puri, Khurda, Angul,

Contact: Cyclone Warning Division, Office of the Director General of Meteorology,  
India Meteorological Department, Ministry of Earth Sciences.

Phone: (91) 11-24652484, FAX: (91) 11-24643128, 24623220, E-mail: cwdhq2008@gmail.com, Website: [rsmcnewdelhi.imd.gov.in](http://rsmcnewdelhi.imd.gov.in)

Spatial rainfall distribution: Isolated: <25%, A few: 26-50%, Many: 51-75%, Most: 76-100%

Rainfall amount (mm): Heavy rain: 64.5 – 115.5, Very heavy rain: 115.6 – 204.4, Extremely heavy rain: 204.5 or more.

Deogarh, Sundergarh on 26<sup>th</sup> May and heavy rainfall at isolated places in north interior Odisha on 27<sup>th</sup>.

- **West Bengal & Sikkim:** Light to moderate rainfall at most places with heavy to very heavy rainfall over Medinipur, South 24 Parganas and heavy rainfall at isolated places in Howrah, Hooghly, & north 24 Parganas districts on 25<sup>th</sup>, extremely heavy rainfall at isolated places over Jhargram, Medinipur, south 24 Parganas and heavy to very heavy rainfall at a few places Purulia, Bankura, Bardhaman, Howrah, Hooghly, Kolkata, north 24 Parganas, Bhirbhum and heavy falls at isolated places over Nadia, Murshidabad, Darjeeling Districts on 26<sup>th</sup> May and heavy to very heavy rain at isolated places in Malda & Darjeeling, Dinajpur, Kalimpong, Jalpaiguri, Sikkim and heavy rain at a few places over Bankura, Purulia, Bardhaman, Bhirbhum & Murshidabad on 27<sup>th</sup> May.
- **Jharkhand:** Light to moderate rainfall at most places with heavy to very heavy rainfall and extremely heavy falls at isolated places on 26<sup>th</sup> & 27<sup>th</sup> May and isolated heavy falls on 28<sup>th</sup> May.
- **Bihar:** Light to moderate rainfall at most places with heavy to very heavy rainfall and extremely heavy falls at isolated places on 27<sup>th</sup> May and isolated heavy to very heavy falls on 28<sup>th</sup> May.
- **Assam & Meghalaya:** Light to moderate rainfall at most places with heavy to very heavy rainfall at isolated places on 26<sup>th</sup> & 27<sup>th</sup> May.

#### **(ii) Wind warning:**

- Gale winds speed reaching 65–75 kmph gusting to 85 kmph prevailing over Westcentral adjoining Eastcentral Bay of Bengal. It is very likely to increase further becoming Gale wind speed reaching 90 - 100 kmph gusting to 110 kmph over major parts of central Bay of Bengal by 24<sup>th</sup> evening and would decrease gradually from 25<sup>th</sup> Afternoon.
- Squally wind speed reaching 40-50 kmph gusting 60 kmph is very likely to prevail over North Bay of Bengal and adjoining westcentral Bay of Bengal along and off north Andhra Pradesh–Odisha–West Bengal–Bangladesh coasts from 24<sup>th</sup> afternoon. It would increase gradually becoming 50-60 kmph gusting to 70 kmph from 25<sup>th</sup> forenoon. It would further increase becoming gale wind speed 60-70 kmph gusting to 80 kmph from 26<sup>th</sup> early hours over northwest Bay of Bengal and along and off West Bengal & north Odisha and Bangladesh coasts. It would gradually increase further becoming 90-100 gusting to 110 kmph from 26<sup>th</sup> morning and increase thereafter becoming 155-165 kmph gusting to 185 kmph at the time of landfall.
- Squally wind speed reaching 40-50 kmph gusting 60 kmph is very likely to prevail over south Jharkhand from on 26<sup>th</sup> noon and increase gradually becoming 110-120 kmph gusting to 130 kmph during 26<sup>th</sup> evening / night.
- Squally wind speed reaching 55-65 kmph gusting to 75 kmph likely over north interior districts of Odisha, interior districts of Gangetic West Bengal during 26<sup>th</sup> evening to 27<sup>th</sup> morning.
- Squally wind speed reaching 50–60 kmph gusting to 70 kmph prevailing over eastcentral Bay of Bengal and adjoining north Andaman Sea during next 12 hours.

#### **(iii) Sea condition**

- Sea condition is High to Very High over Westcentral & adjoining eastcentral Bay of Bengal. It is very likely to become Very High to Phenomenal over northern parts of central Bay of Bengal,

---

Contact: Cyclone Warning Division, Office of the Director General of Meteorology,  
India Meteorological Department, Ministry of Earth Sciences.

Phone: (91) 11-24652484, FAX: (91) 11-24643128, 24623220, E-mail: [cwdhq2008@gmail.com](mailto:cwdhq2008@gmail.com), Website: [rsmcnewdelhi.imd.gov.in](http://rsmcnewdelhi.imd.gov.in)

Spatial rainfall distribution: Isolated: <25%, A few: 26-50%, Many: 51-75%, Most: 76-100%

Rainfall amount (mm): Heavy rain: 64.5 – 115.5, Very heavy rain: 115.6 – 204.4, Extremely heavy rain: 204.5 or more.

north Bay of Bengal and along & off north Andhra Pradesh-Odisha–West Bengal-Bangladesh coasts during 24th – 26th May.

**(iv) Fishermen Warning**

- The fishermen are advised not to venture into central Bay of Bengal during 24th–25th May and into north Bay of Bengal and along & off north Andhra Pradesh-Odisha-West Bengal–Bangladesh coasts from 24th – 26th May.
- Those who are out in the Deep Sea of north and adjoining central Bay of Bengal are advised to return to the coast.

**(v) Storm surge warning.**

Tidal waves of height 2-4 meters above astronomical tide are likely to inundate low lying coastal areas of Jhargram, south 24 Parganas, Medinipur, Balasore, Bhadrak, Kendrapara & Jagatsighpur Districts around the time of landfall.

The intensification & likely movement of the system is under continuous surveillance and the concerned state governments are being informed regularly.

Kindly visit [www.rsmcnewdelhi.imd.gov.in](http://www.rsmcnewdelhi.imd.gov.in) and [www.mausam.imd.gov.in](http://www.mausam.imd.gov.in) for regular updates.

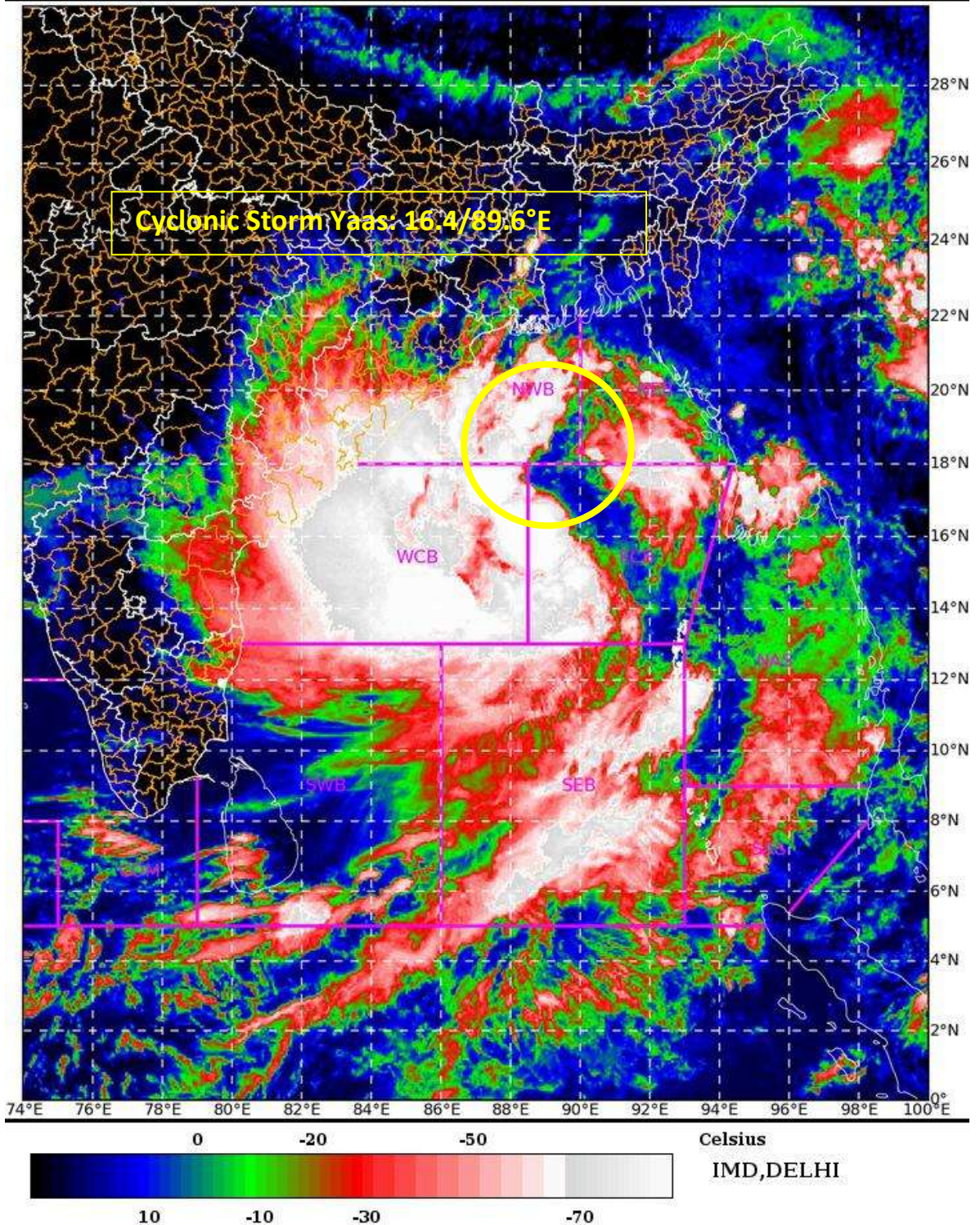
SAT : INSAT-3D IMG

24-05-2021/(0530 to 0557) GMT

IMG\_TIR1\_TEMP 10.8 um

24-05-2021/(1100 to 1127) IST

L1C Mercator



Contact: Cyclone Warning Division, Office of the Director General of Meteorology,  
India Meteorological Department, Ministry of Earth Sciences.

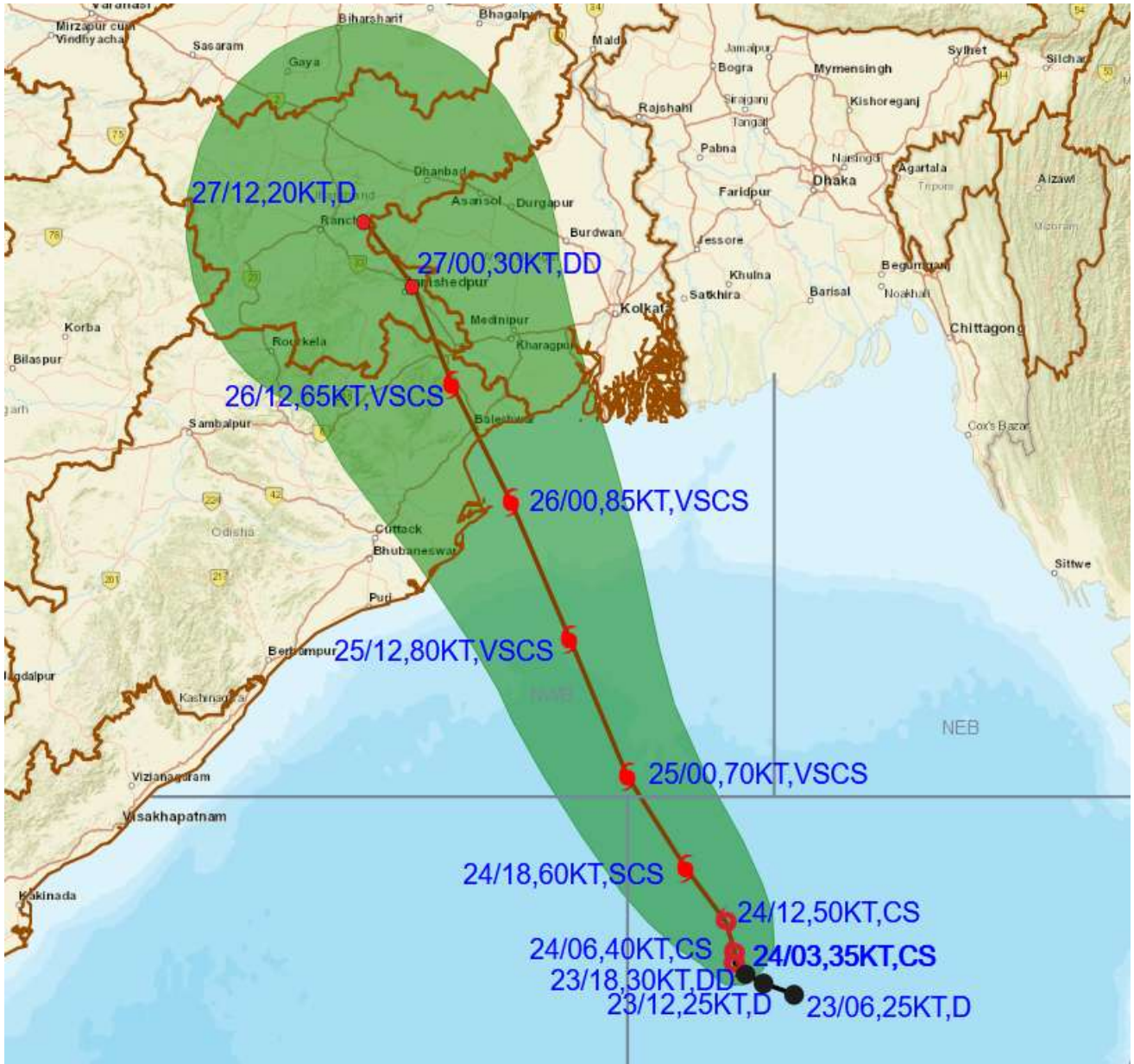
Phone: (91) 11-24652484, FAX: (91) 11-24643128, 24623220, E-mail: [cwdhq2008@gmail.com](mailto:cwdhq2008@gmail.com), Website: [rsmcnewdelhi.imd.gov.in](http://rsmcnewdelhi.imd.gov.in)

Spatial rainfall distribution: Isolated: <25%, A few: 26-50%, Many: 51-75%, Most: 76-100%

Rainfall amount (mm): Heavy rain: 64.5 – 115.5, Very heavy rain: 115.6 – 204.4, Extremely heavy rain: 204.5 or more.



## OBSERVED AND FORECAST TRACK ALONGWITH CONE OF UNCERTAINTY OF CYCLONIC STORM "YAAS" OVER EASTCENTRAL BAY OF BENGAL BASED ON 0300 UTC OF 24<sup>th</sup> May, 2021



DATE/TIME IN UTC  
 IST=UTC + 0530  
 L: LOW PRESSURE AREA  
 WML: WELL MARKED LOW PRESSURE AREA  
 D: DEPRESSION (17-27 KT)  
 DD: DEEP DEPRESSION (28-33 KT)  
 CS: CYCLONIC STORM (34-47 KT)  
 SCS: SEVERE CYCLONIC STORM (48-63KT)  
 VSCS: VERY SEVERE CYCLONIC STORM (64-89 KT)  
 ESCS: EXTREMELY SEVERE CYCLONIC STORM (90-119 KT)  
 SuCS: SUPER CYCLONIC STORM ( $\geq$  120 KT)

- LESS THAN 34 KT
- 34-47 KT
- $\geq$  48 KT
- OBSERVED TRACK
- FORECAST TRACK
- CONE OF UNCERTAINTY

Contact: Cyclone Warning Division, Office of the Director General of Meteorology,  
 India Meteorological Department, Ministry of Earth Sciences.

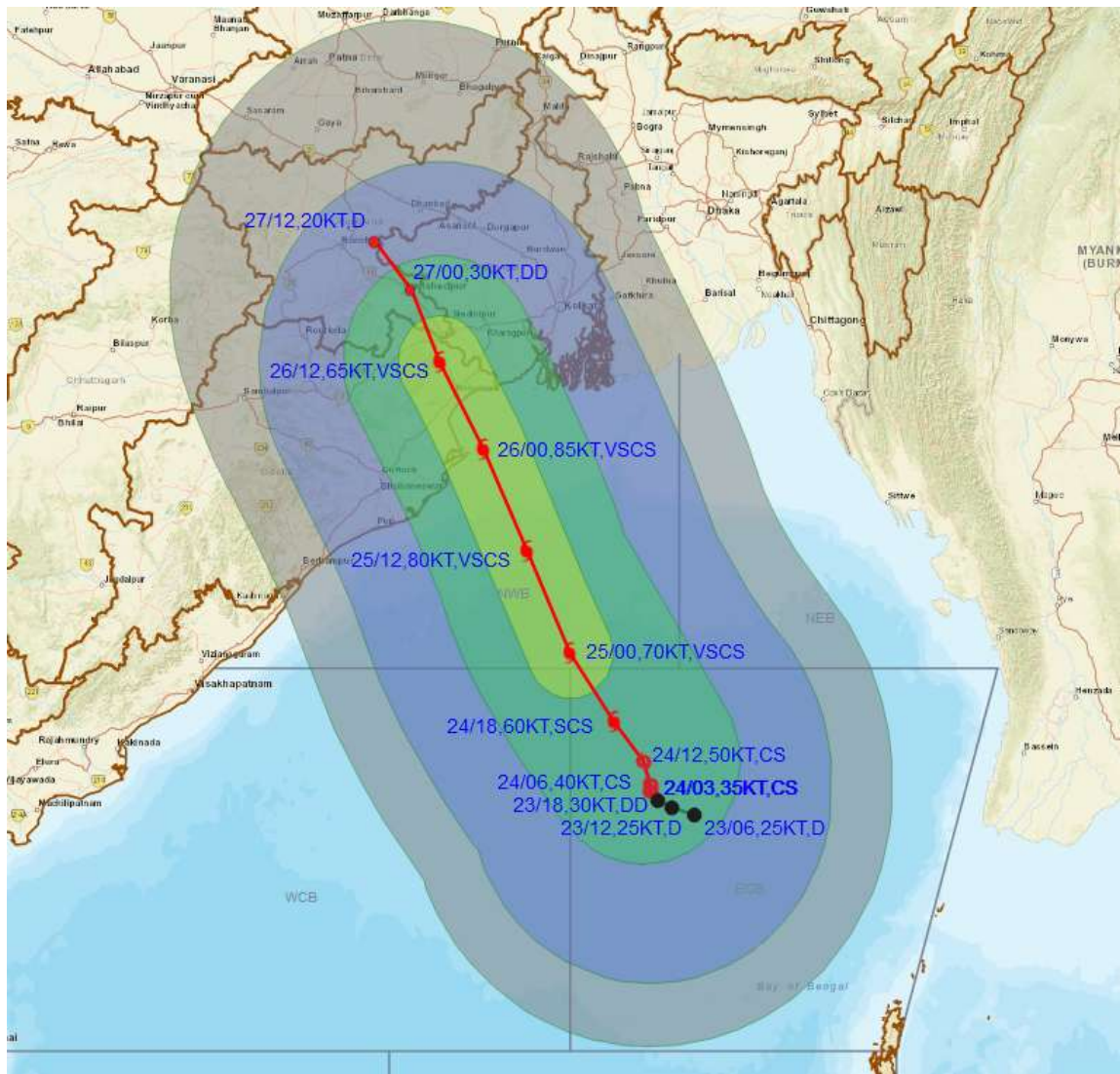
Phone: (91) 11-24652484, FAX: (91) 11-24643128, 24623220, E-mail: [cwdhq2008@gmail.com](mailto:cwdhq2008@gmail.com), Website: [rsmcnewdelhi.imd.gov.in](http://rsmcnewdelhi.imd.gov.in)

Spatial rainfall distribution: Isolated: <25%, A few: 26-50%, Many: 51-75%, Most: 76-100%

Rainfall amount (mm): Heavy rain: 64.5 – 115.5, Very heavy rain: 115.6 – 204.4, Extremely heavy rain: 204.5 or more.



## OBSERVED AND FORECAST TRACK ALONGWITH QUADRANT WIND DISTRIBUTION OF CYCLONIC STORM "YAAS" OVER EASTCENTRAL BAY OF BENGAL BASED ON 0300 UTC OF 24<sup>th</sup> May, 2021



DATE/TIME IN UTC  
 IST=UTC + 0530  
 L: LOW PRESSURE AREA  
 WML: WELL MARKED LOW PRESSURE AREA  
 D: DEPRESSION (17-27 KT)  
 DD: DEEP DEPRESSION (28-33 KT)  
 CS: CYCLONIC STORM (34-47 KT)  
 SCS: SEVERE CYCLONIC STORM (48-63KT)  
 VSCS: VERY SEVERE CYCLONIC STORM (64-89 KT)  
 ESCS: EXTREMELY SEVERE CYCLONIC STORM (90-119 KT)  
 SuCS: SUPER CYCLONIC STORM (≥ 120 KT)

● LESS THAN 34 KT  
 ○ 34-47 KT  
 ⊙ ≥ 48 KT  
 — OBSERVED TRACK  
 — FORECAST TRACK  
 — CONE OF UNCERTAINTY  
 AREA OF MAXIMUM SUSTAINED WIND SPEED:  
 ■ 28-33 KT (52-61 KMPH)  
 ■ 34-49 (62-91)  
 ■ 50-63 (92-117)  
 ■ ≥ 64 (≥118 KMPH)

### IMPACT OVER THE SEA

MSW (knot/kmph)	Impact	Action
28-33 (52-61)	Very rough seas	Total suspension of fishing operations
34-49 (62-91)	High to very high seas	Total suspension of fishing operations
50-63 (92-117)	Very high seas	Total suspension of fishing operations
≥ 64 (≥118)	Phenomenal	Total suspension of fishing operations

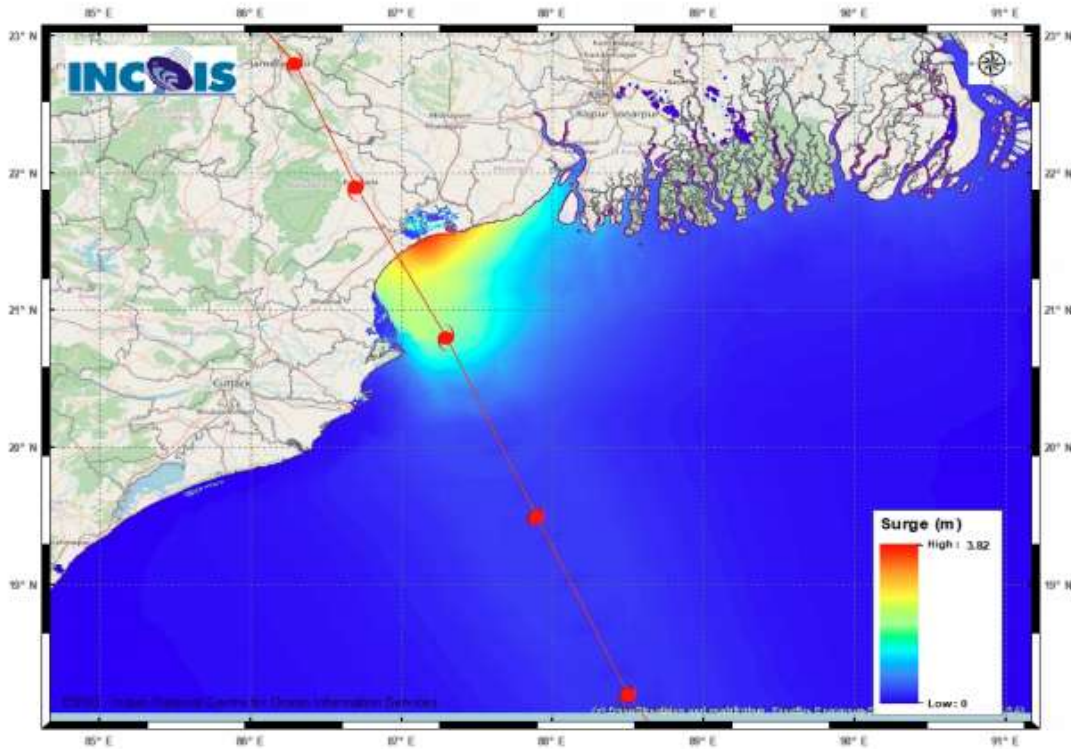
Contact: Cyclone Warning Division, Office of the Director General of Meteorology,  
 India Meteorological Department, Ministry of Earth Sciences.

Phone: (91) 11-24652484, FAX: (91) 11-24643128, 24623220, E-mail: [cwdhq2008@gmail.com](mailto:cwdhq2008@gmail.com), Website: [rsmcnewdelhi.imd.gov.in](http://rsmcnewdelhi.imd.gov.in)

Spatial rainfall distribution: Isolated: <25%, A few: 26-50%, Many: 51-75%, Most: 76-100%

Rainfall amount (mm): Heavy rain: 64.5 – 115.5, Very heavy rain: 115.6 – 204.4, Extremely heavy rain: 204.5 or more.

### Storm Surge Forecast around the time of Landfall:



#### STORM SURGE HEIGHT INFORMATION:

\* The below listed surge heights are over and above astronomical tide.

MANDAL/TALUK	DISTRICT	STATE / UNION TERRITORY	NEAREST PLACE OF HABITATION	STORM SURGE (m) *	EXPECTED INUNDATION EXTENT (km)
Baleswar	Baleswar	Odisha	Kumbhigari	2.1-3.8	Upto 2.33
Basirhat	North 24 Parganas	West Bengal	Amlamethi	0.5-0.9	Upto 0.37
Bhadrak	Bhadrak	Odisha	Mohanpur	0.9-2.1	Upto 7.02
Diamond Harbour	South 24 Parganas	West Bengal	Pashchim Bhabanipur	0.5-1.1	Upto 0.78
Kanthi	Purba Medinipur	West Bengal	Safar Chata	0.5-2.9	Upto 1.50
Kendraparha	Kendrapara	Odisha	Tikayat Nagar	0.5-1.5	Upto 2.64
Tamluk	Purba Medinipur	West Bengal	Jamitta	0.5-1.3	Upto 0.42
Uluberiya	Haora	West Bengal	Orphuli	0.5-0.8	Upto 0.44

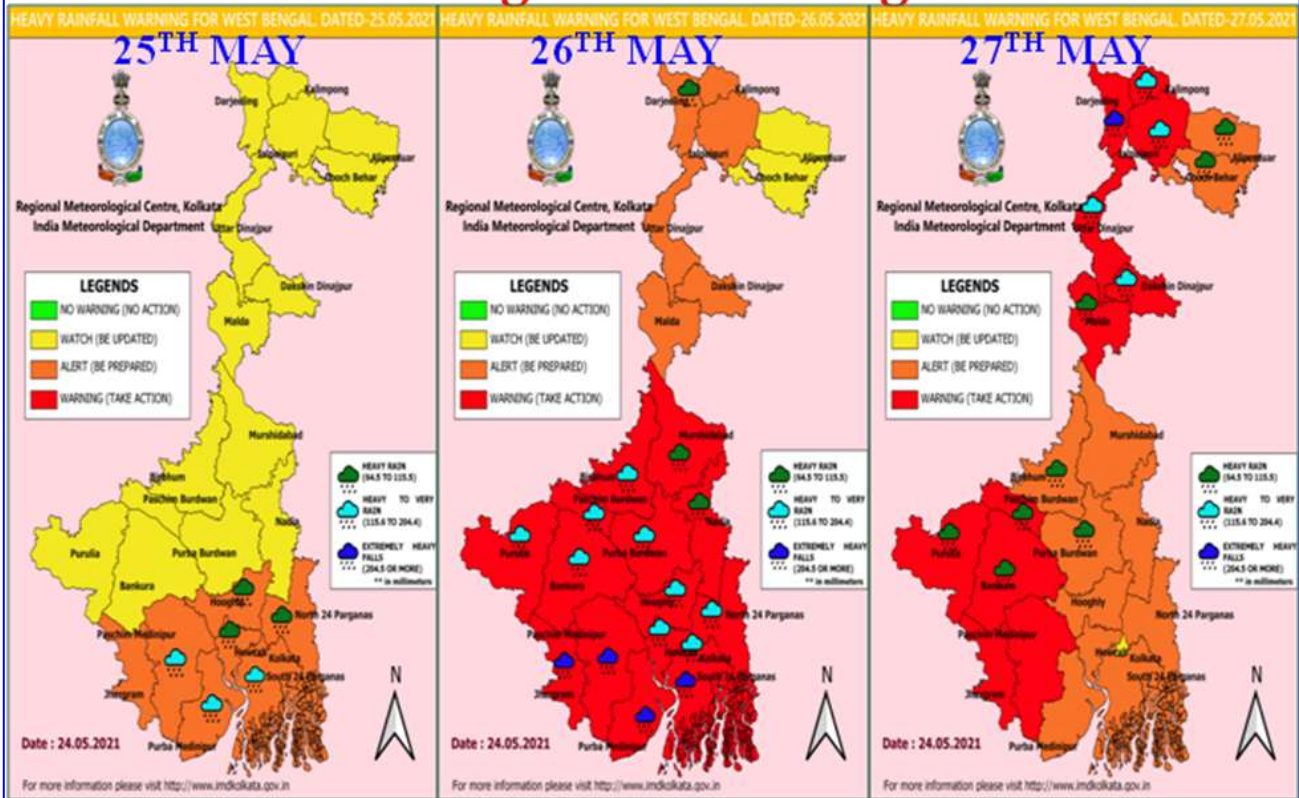
Contact: Cyclone Warning Division, Office of the Director General of Meteorology,  
India Meteorological Department, Ministry of Earth Sciences.

Phone: (91) 11-24652484, FAX: (91) 11-24643128, 24623220, E-mail: cwdhq2008@gmail.com, Website: [rsmcnewdelhi.imd.gov.in](http://rsmcnewdelhi.imd.gov.in)

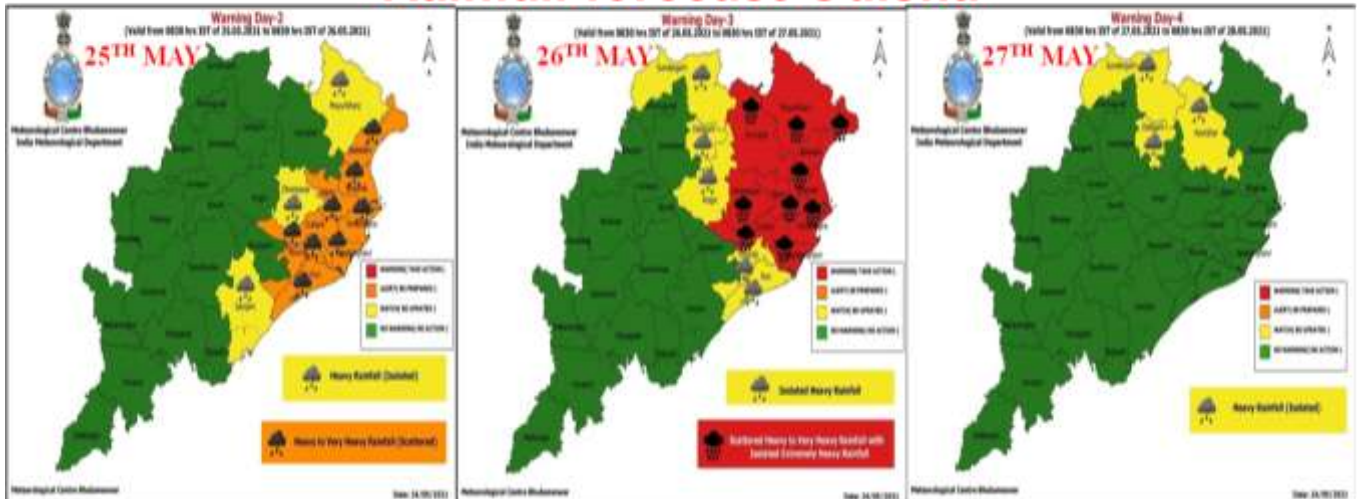
Spatial rainfall distribution: Isolated: <25%, A few: 26-50%, Many: 51-75%, Most: 76-100%

Rainfall amount (mm): Heavy rain: 64.5 – 115.5, Very heavy rain: 115.6 – 204.4, Extremely heavy rain: 204.5 or more.

# Rainfall warning for West Bengal & Sikkim



# Rainfall forecast Odisha



Contact: Cyclone Warning Division, Office of the Director General of Meteorology,  
India Meteorological Department, Ministry of Earth Sciences.

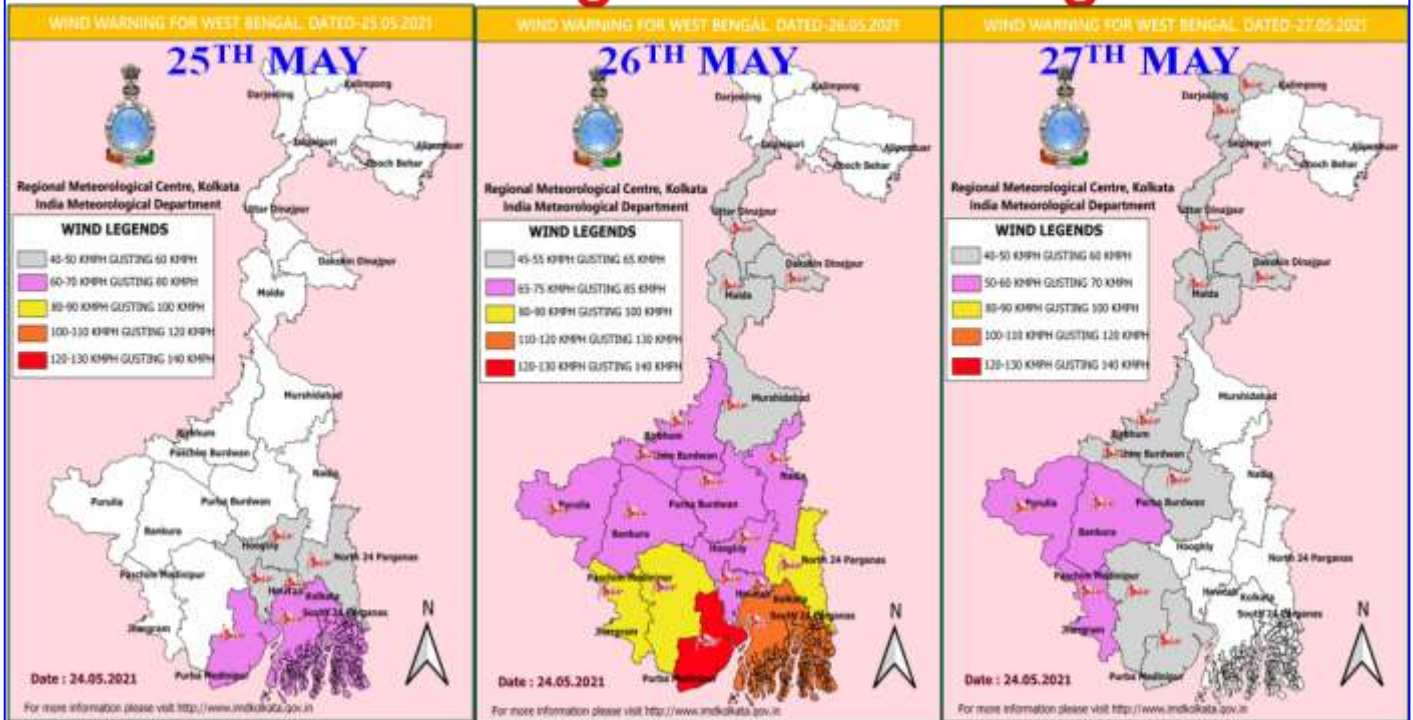
Phone: (91) 11-24652484, FAX: (91) 11-24643128, 24623220, E-mail: [cwdhq2008@gmail.com](mailto:cwdhq2008@gmail.com), Website: [rsmcnewdelhi.imd.gov.in](http://rsmcnewdelhi.imd.gov.in)

Spatial rainfall distribution: Isolated: <25%, A few: 26-50%, Many: 51-75%, Most: 76-100%

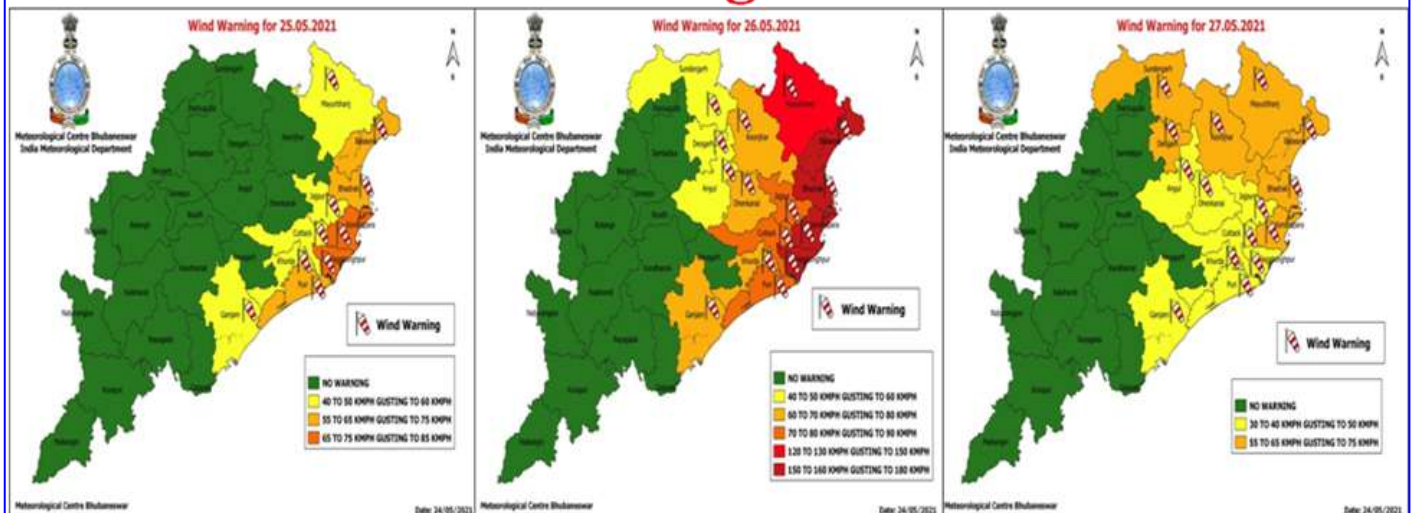
Rainfall amount (mm): Heavy rain: 64.5 – 115.5, Very heavy rain: 115.6 – 204.4, Extremely heavy rain: 204.5 or more.



# Wind warning for West Bengal



# Wind warning for Odisha



Contact: Cyclone Warning Division, Office of the Director General of Meteorology,  
India Meteorological Department, Ministry of Earth Sciences.

Phone: (91) 11-24652484, FAX: (91) 11-24643128, 24623220, E-mail: [cwdhq2008@gmail.com](mailto:cwdhq2008@gmail.com), Website: [rsmcnewdelhi.imd.gov.in](http://rsmcnewdelhi.imd.gov.in)

Spatial rainfall distribution: Isolated: <25%, A few: 26-50%, Many: 51-75%, Most: 76-100%

Rainfall amount (mm): Heavy rain: 64.5 – 115.5, Very heavy rain: 115.6 – 204.4, Extremely heavy rain: 204.5 or more.